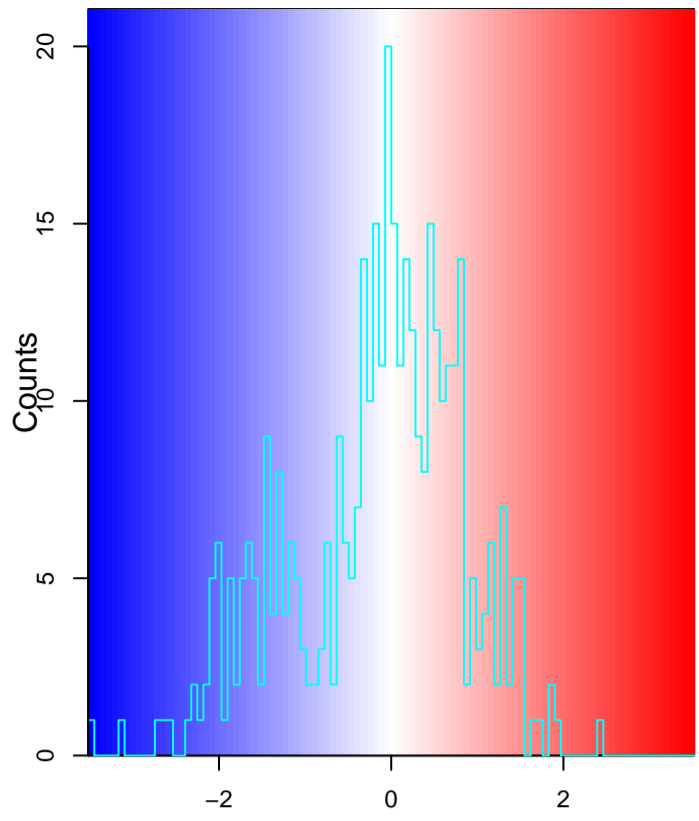
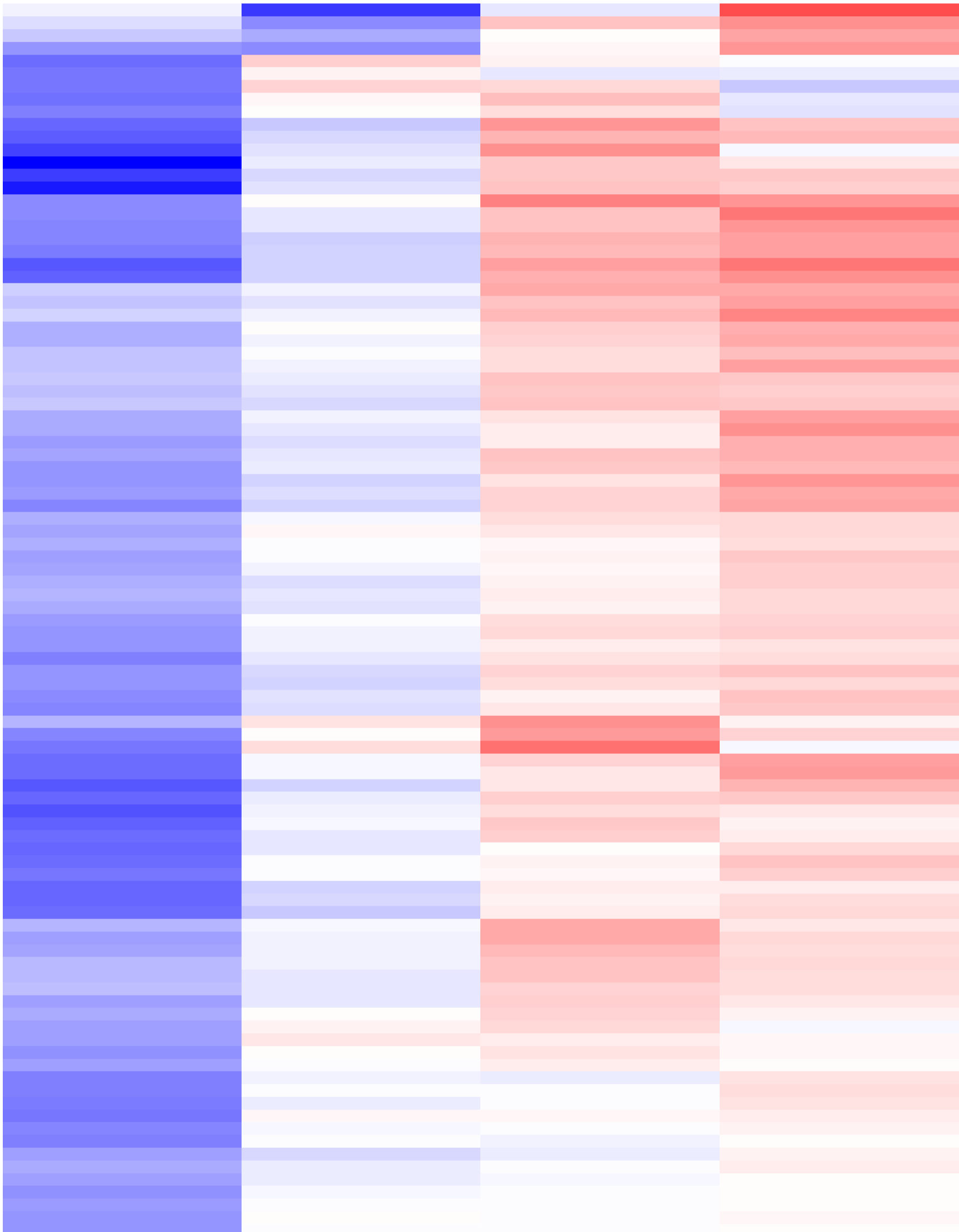
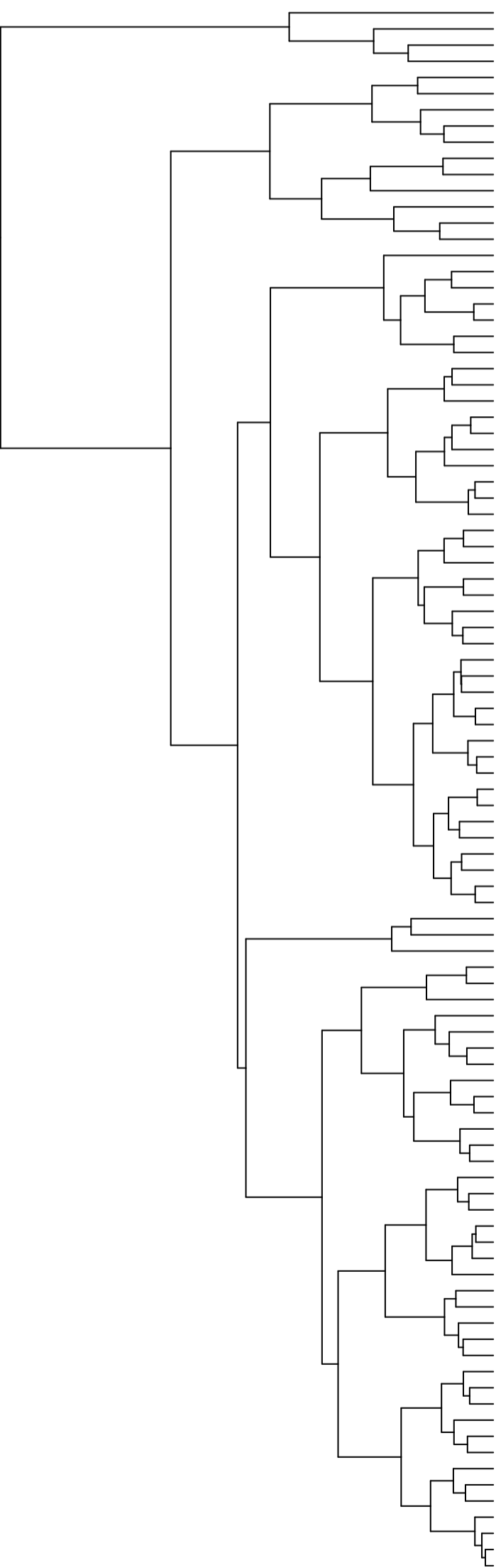
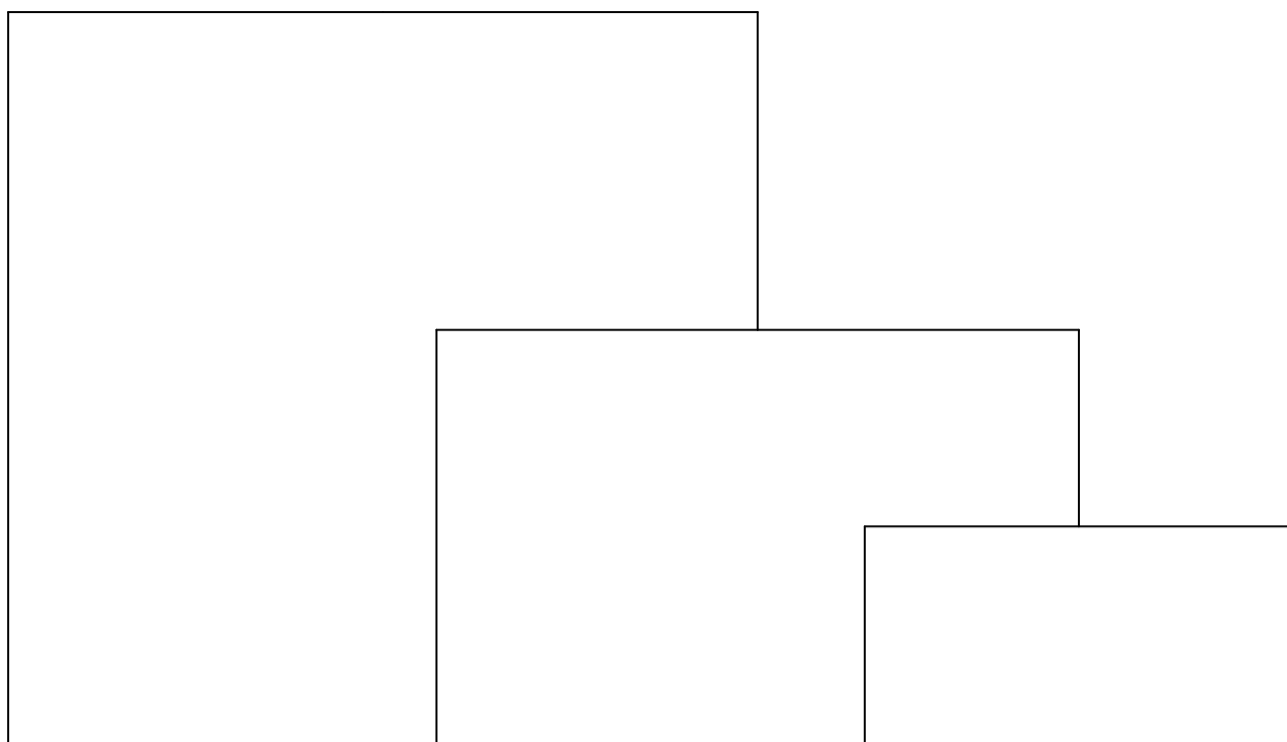


log(Ratio)



Peptides Cluster 1



H3255_1_H_M

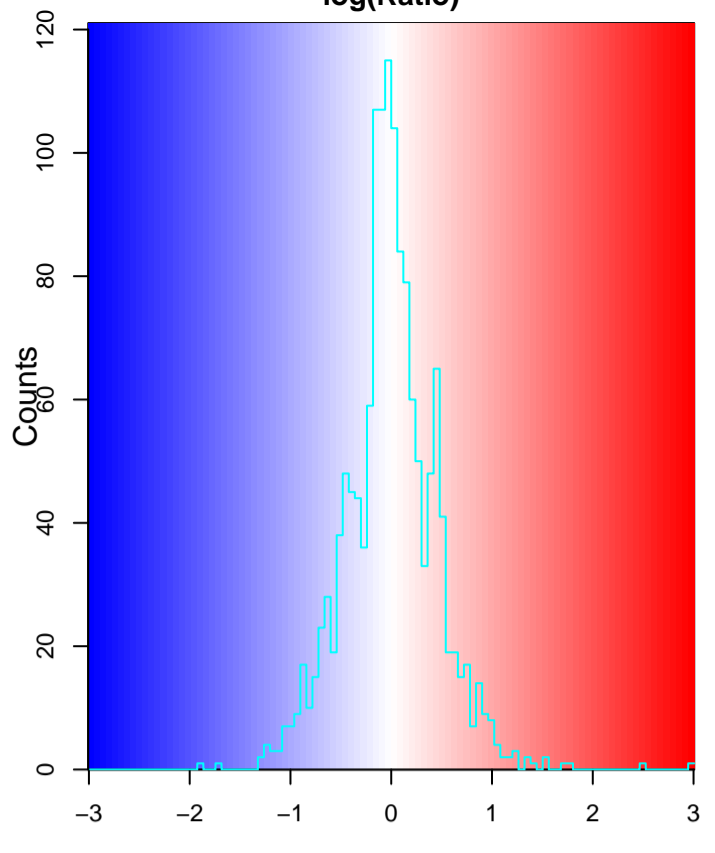
X_H1975_1_H_M

H3255_1_M_L

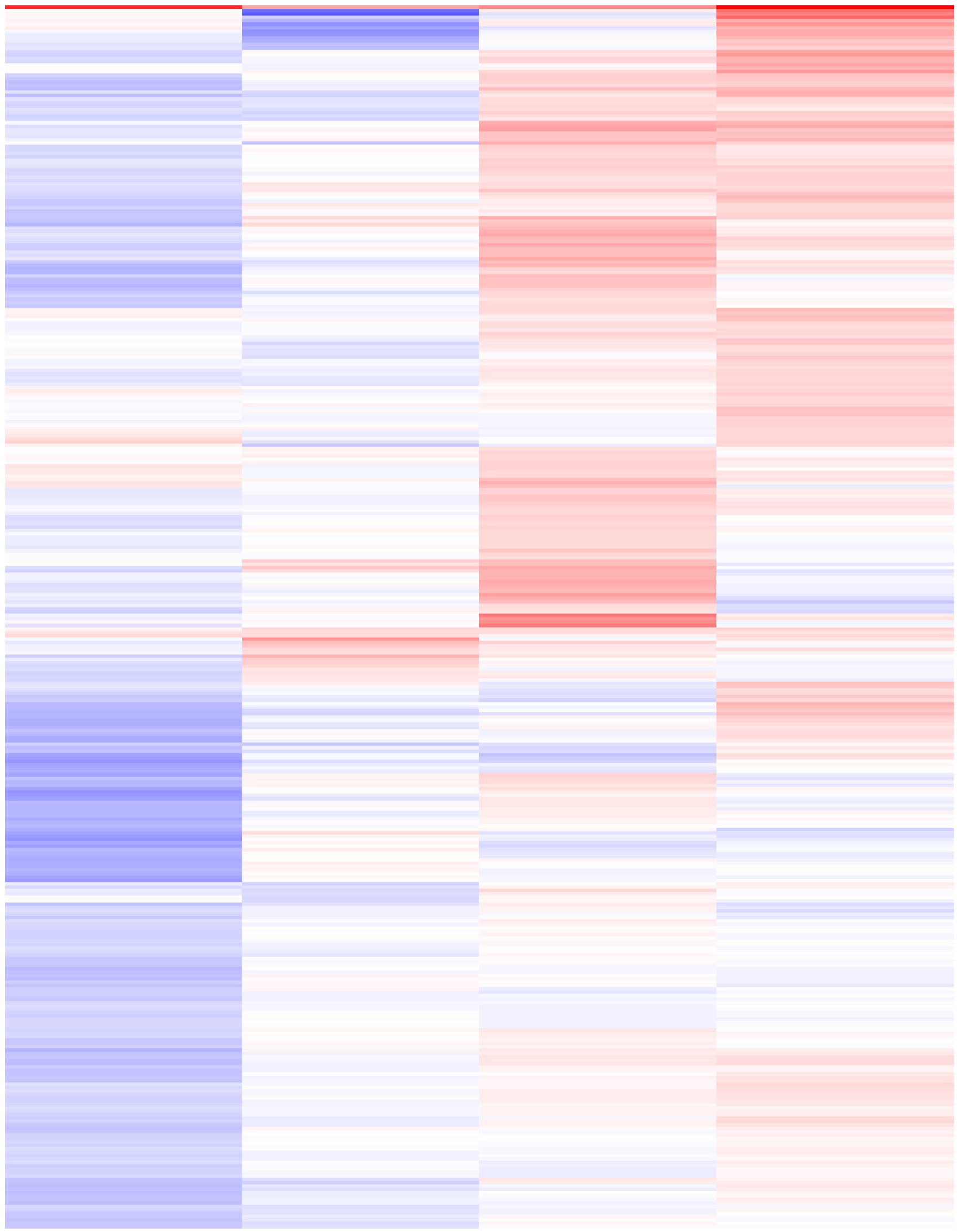
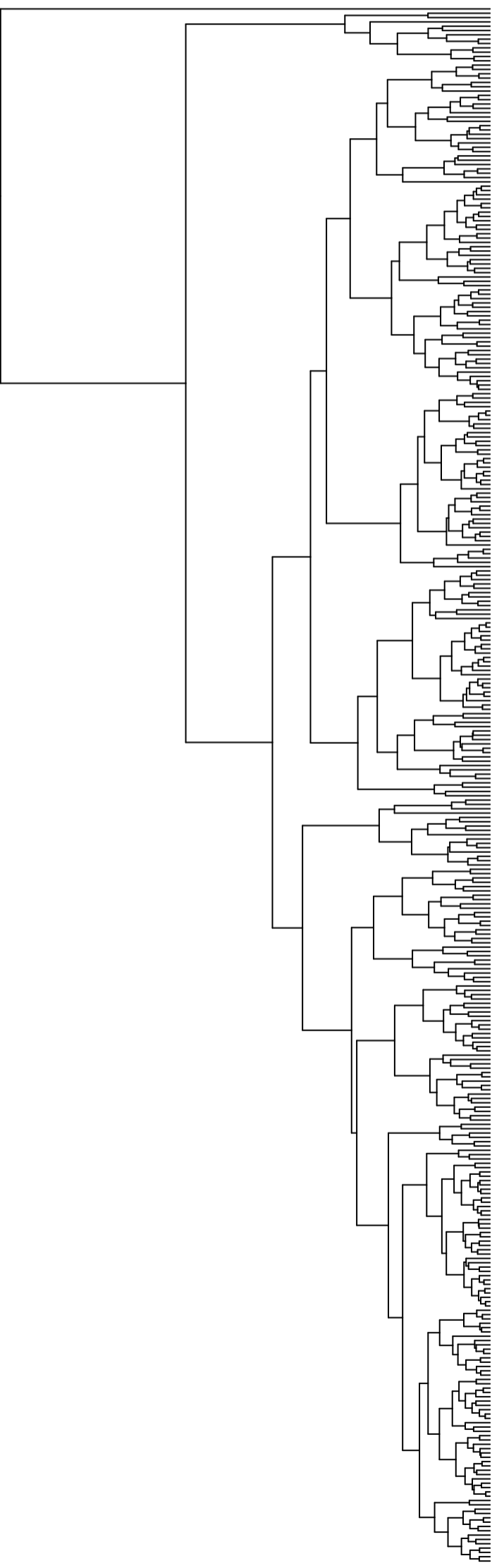
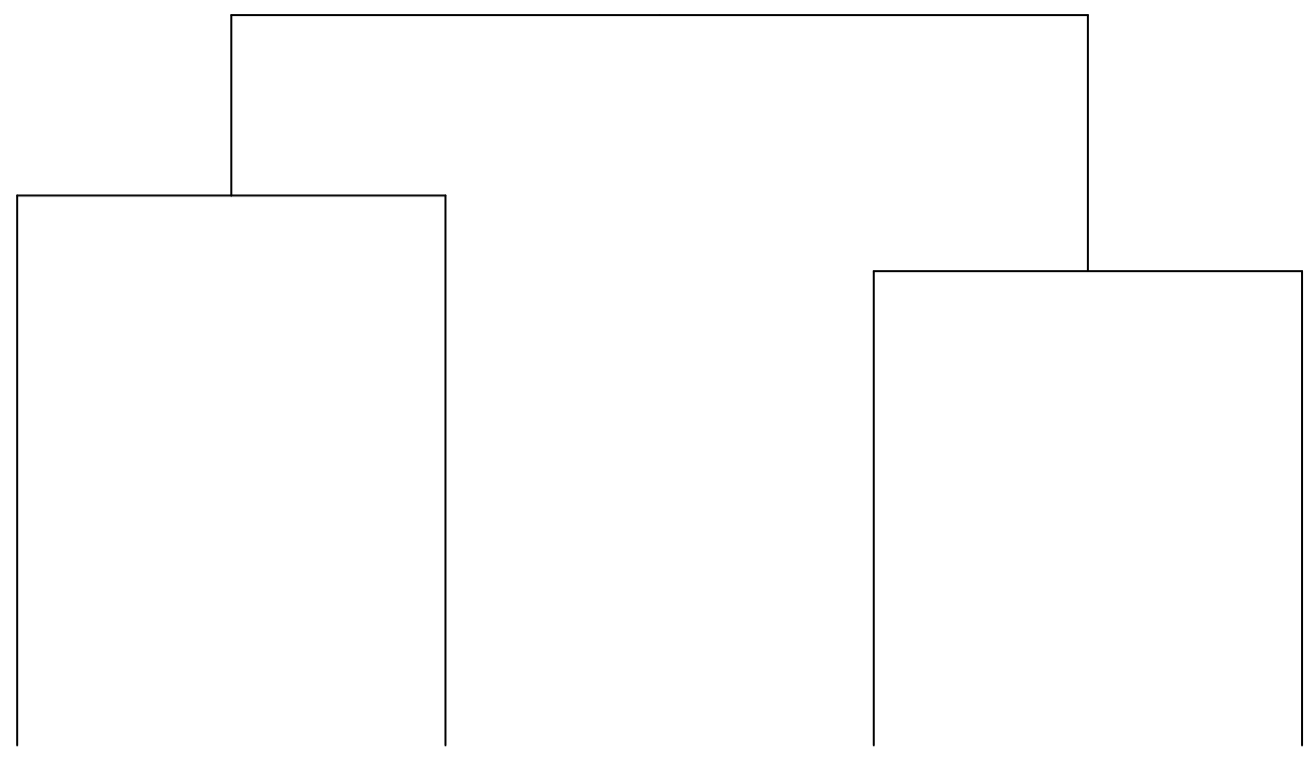
X_H1975_1_M_L

- PHACTR4_T442
- ANK3_S1444
- FAM21A_S332
- EPHA2_S807
- NAAB3_S190
- FOXK1_S445
- NDRG1_S332
- RPS6_S240
- ANKK2_Y42
- PCCDA_S76
- C19orf21_S471
- FASN_T2204
- DAP_S2
- EGFR_Y1197
- KIF4A_S801
- MAPK3_T202
- BOD1L1_S1077
- ARHGAP12_T703
- DDI2_S194
- ACACA_S80
- RPS6KA3_T577
- PPP1R12A_S507
- ARHGAP5_S1134
- SHROOM3_S876
- PKHD2_S216
- ARMAK_T4100
- CD97_S831
- C10orf47_S43
- TPR_S2155
- ZC3H11A_S758
- LAD1_S38
- OKR1_S201
- CABLES1_T415
- KANK2_S548
- SHC1_Y428
- PCCDA_S407
- HUP1S3_S614
- ARMAK_S3425
- FAM21A_S288
- ARMAK_S135
- FAM122A_S62
- PKPFB2_S483
- STMN1_S25
- C10orf47_S215
- LARP1_T299
- SPECC1L_S832
- ARMAK_S2297
- MACT1_S1376
- ADAM17_T375
- ZMYND8_S445
- PPP1A1_T1159
- SPTBN1_T2328
- STX12_S139
- WRNBP1_S75
- SENP2_S333
- EGFR_Y1172
- MYO1C_S6
- FILP1L_S791
- SFA2_S270
- MAPK3_Y204
- MAPK1_Y1187
- CDC42EP4_S174
- MLPH_S337
- HGFPR2_S454
- RPS6_S236
- RS1_S636
- ARMAK_S6110
- MLL4_S1718
- TNFS1149
- RAB3GAP1_S664
- NEK3_T333
- NDRP1_S22
- ZFC3H1_S382
- PHACTR4_S600
- CASC3_S60
- PALM2-ARAF2_S979
- PRKQ2_S198
- NDRG3_S331
- TRIM24_S1042
- RAB7A_S72
- TBC1D4_S754
- C19orf21_S400
- ANKK2_S40
- RREB1_S1167
- C10orf47_S212
- METTL1_S27
- SLC8A1_S703
- RALY_S2
- TRIM33_S1119
- ITPKB_S43
- SART1_S448
- RANBP2_T1396
- TBC1D4_T642
- TBC1D5_S561
- GRB10_S474
- AKT1S1_S203
- PNTL1_T184

log(Ratio)



Peptides Cluster 2



H3255_1_H_M

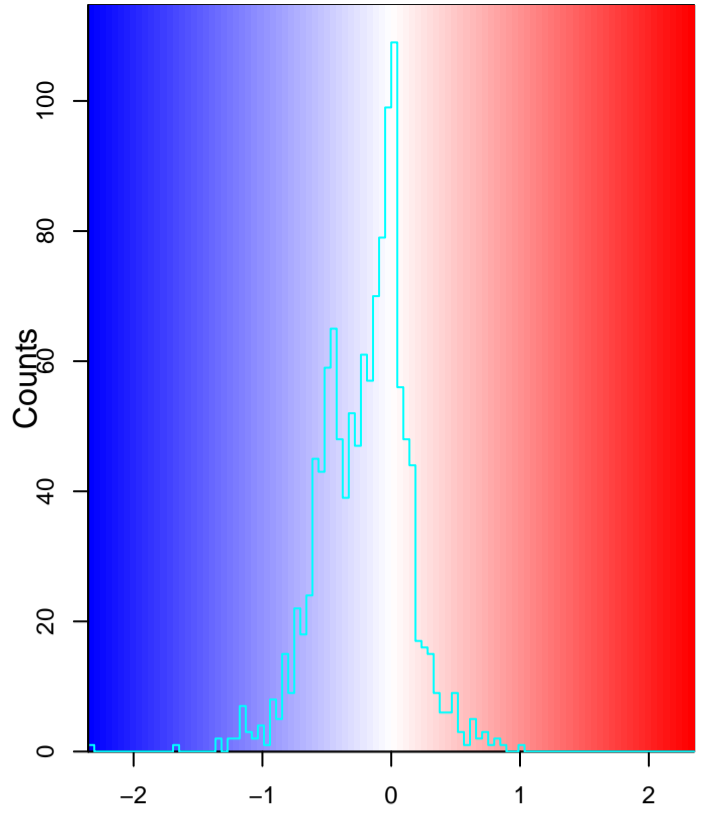
X_H1975_1_H_M

H3255_1_M_L

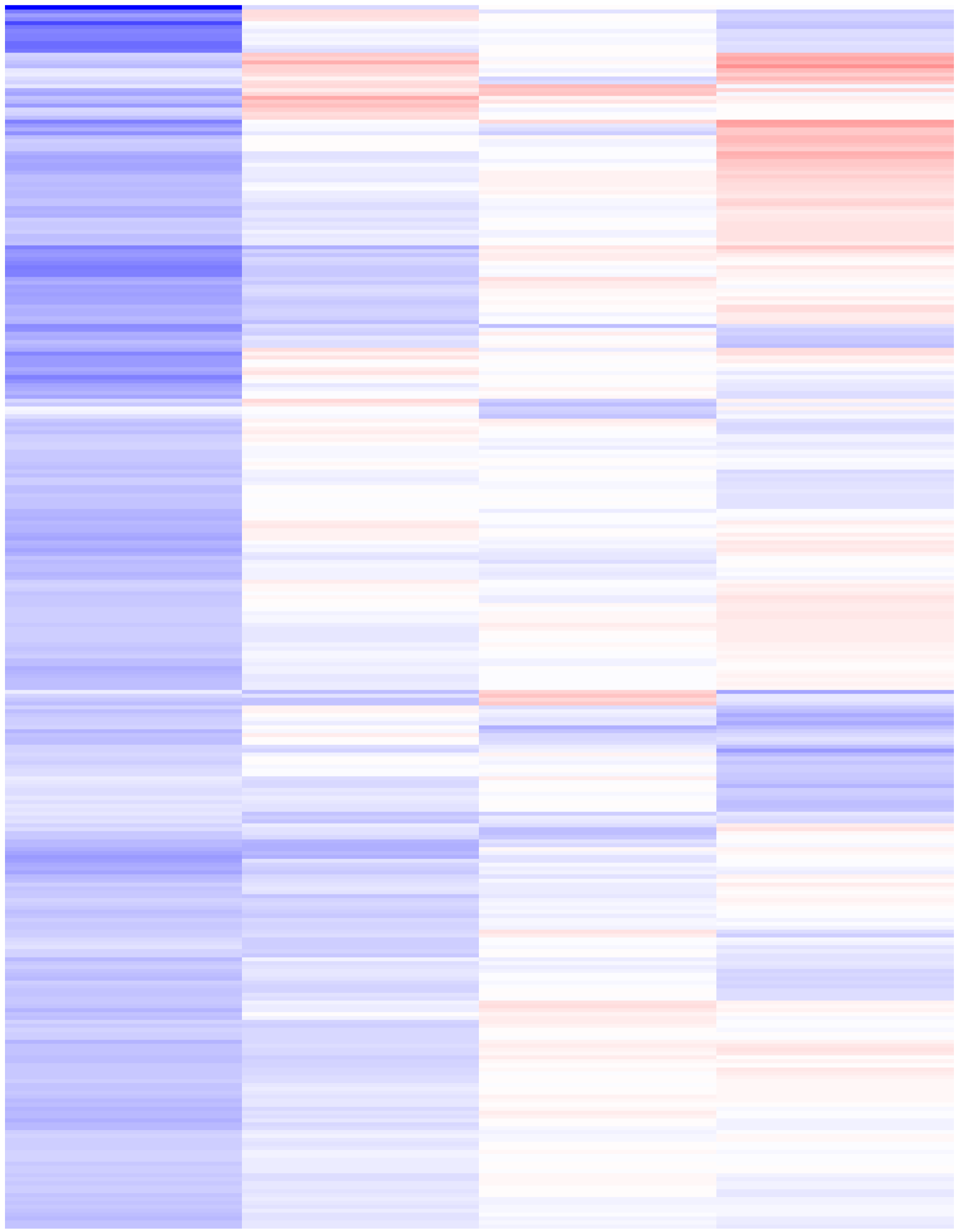
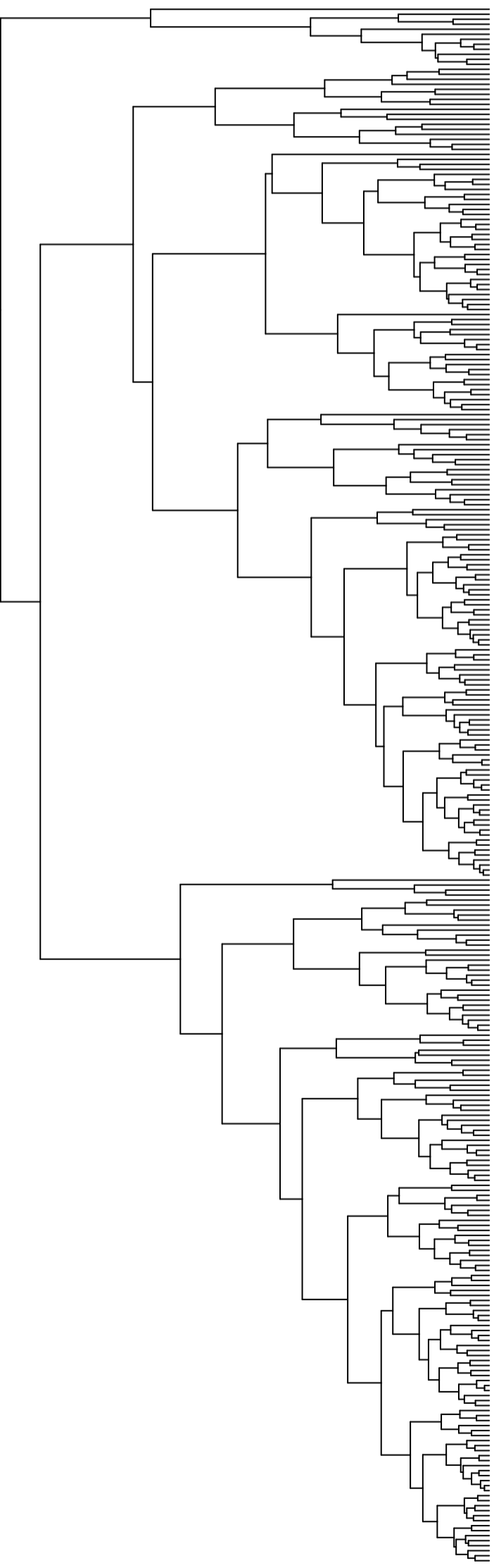
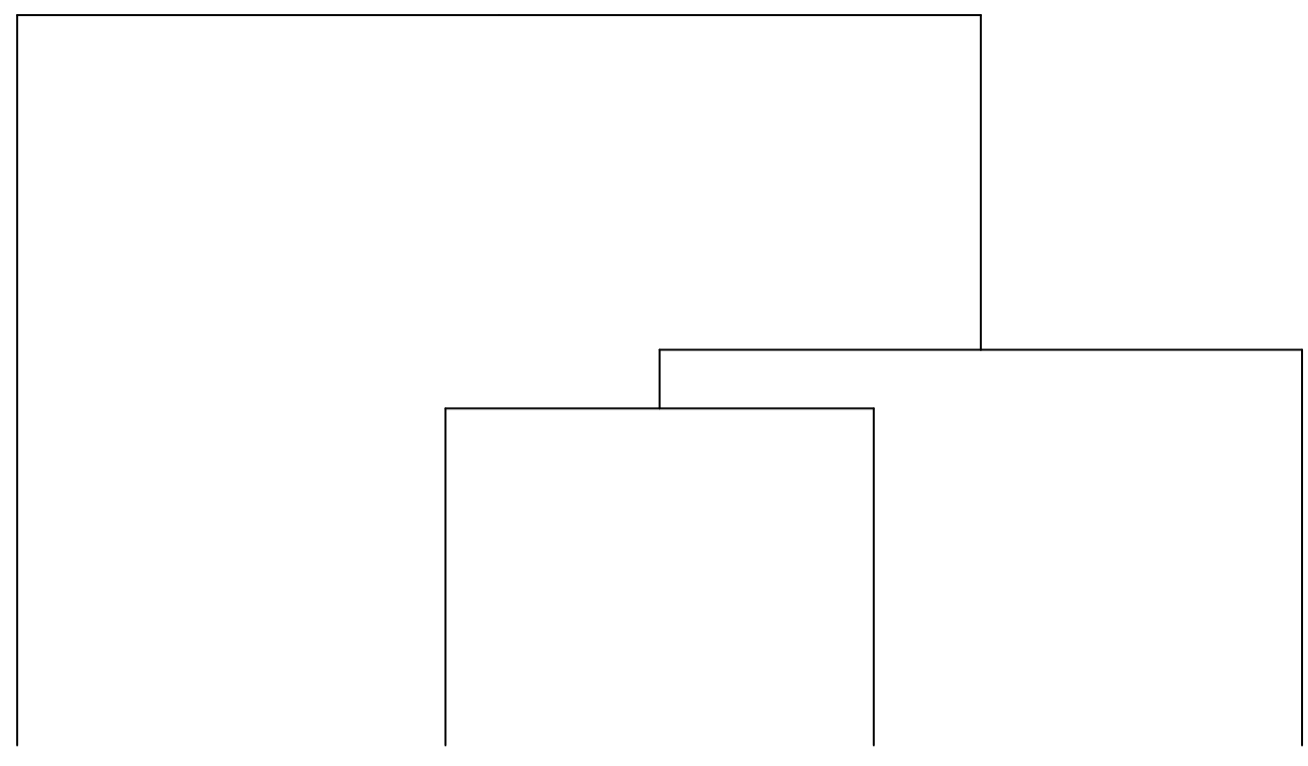
X_H1975_1_M_L

Small text labels for each row in the heatmap, likely representing individual peptide identifiers.

log(Ratio)



Peptides Cluster 3



H3255_1_M_L

X_H1975_1_M_L

X_H1975_1_H_M

H3255_1_H_M

Peptide IDs: A list of peptide sequences, including identifiers like P01234, P01235, P01236, etc., corresponding to the rows in the heatmap.

